

**Prairie Steel** pre-engineered buildings are used for many purposes; from farm buildings to commercial buildings.



■ commercial / industrial



■ equipment storage



■ commercial truckshop



■ heated farm shop



■ community centre



■ grain storage



■ R.M. maintenance shop



■ airplane hangar / office

**PRAIRIE STEEL**

engineered steel buildings

[www.prairiesteel.com](http://www.prairiesteel.com)



Prairie Steel Products Ltd.  
Box 8 Clavet, SK S0K 0Y0  
[www.prairiesteel.com](http://www.prairiesteel.com)  
Ph 1-888-398-7150  
Fax 306-934-1153

18 kms east of Saskatoon  
on Highway 16.  
For a dealer in your area,  
go to [www.prairiesteel.com](http://www.prairiesteel.com)

We reserve the right to change  
or modify information contained  
in this publication without notice.

# engineered steel buildings



## unassembled building

- 8" galvanized wall girts
- easy to ship across Canada and US
- easy bolt-together set-up system

### Building options

#### building sizes

- width 40'-120' (10' increments)
- lengths 40'-120' (20' increments)
- outside eave heights 10' to 32'

#### custom sizes

- be sure to ask about other sizes that may be more suitable for you

#### doors

- walk-ins
- sliding doors
- bifold doors
- overhead doors

#### insulation

- white backed metal building insulation (up to R20 comes with vapour barrier)
- metal building insulation (up to R40 vapour barrier not included)



## welded frame building

- 4"x4" steel tube foundation
- 4"x2" steel tube wall girt
- delivery to most locations in Saskatchewan
- main frame set-up included

## wall & roof profile

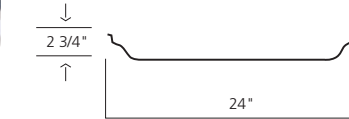


■ sheeting mill line

## industrial rib roof & wall panels

- standard with building packages
- 26 gauge coloured and galvanized

## standing seamroof



- option on low pitch roofs
- no exposed screws



■ standing seam roof panel

## steel foundation



■ base tube on concrete pilings

## steel base tube

- 4"x4" steel tube
- bolt together
- similar to skid on grain bin
- adaptable to a variety of applications:
  - gravel pad
  - concrete pilings
  - steel pilings
  - concrete pad

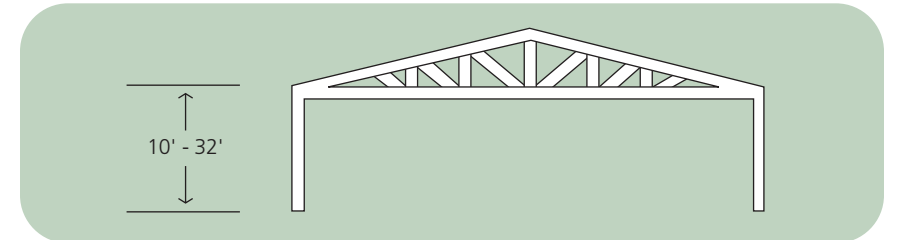


■ corner joint

## standard features

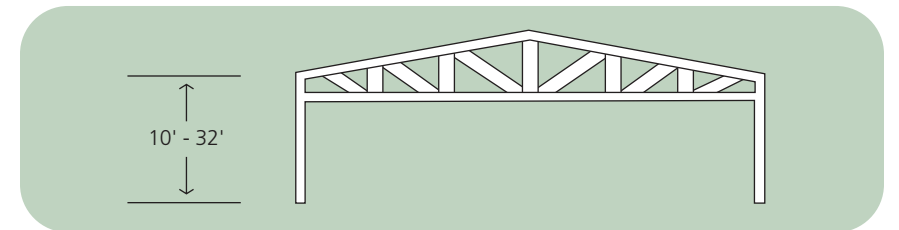
26 gauge industrial rib coloured walls and galvanized roof  
 26 gauge coloured trim and flashing  
 2:12 roof slope  
 truss frame design  
 trusses spaced every 20'

**truss frame design** is an economical approach to a quality clear-span building. 40' to 60' spans can be prefab to allow for quick and easy frame erection upon delivery. Steel tubular base on prefab design requires no cement footings.



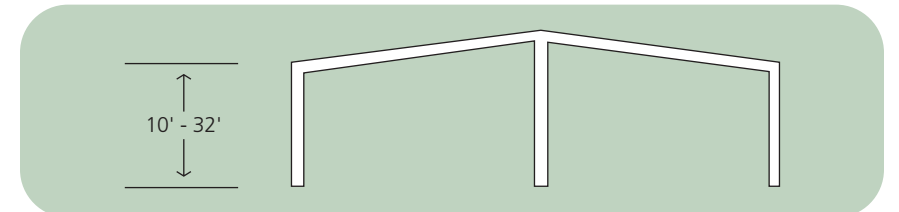
■ truss frame (40' to 60' span) 2:12 slope

**deep truss frame design** is engineered for 70' to 120' clear spans. Deep Truss design adds superior strength and rigidity and requires only simple pile foundation.



■ deep truss frame (70' to 120' span) 1:12 and 1½:12 slope

**multi span design** allows for greater spans at an increased savings. Straight roof beams and wall columns allow for increased interior space. Building utilizes a simple concrete footing.



■ multi span (40' to 200' span) 1½:12 to 2:12 slope